



Boston Realty Advisors

**SOUTH END RETAIL FOR LEASE  
1750 WASHINGTON STREET  
BOSTON, MA**



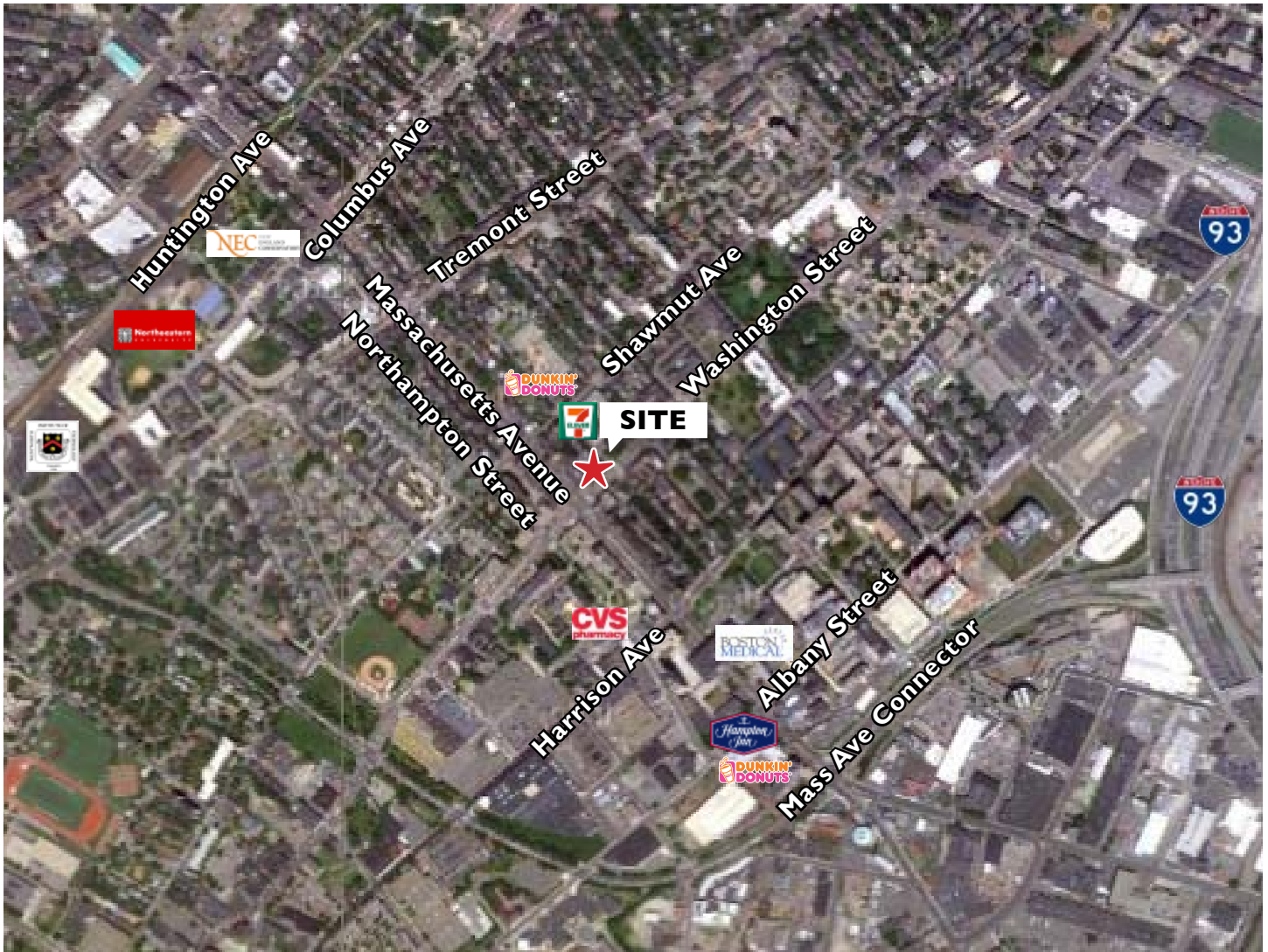
**Boston Realty Advisors**

Boston • New York

## SOUTH END RETAIL • 1750 WASHINGTON STREET, BOSTON, MA

Boston Realty Advisors is proud to represent the landlord for the leasing of 2,027 sf of street-level retail space at the corner of Massachusetts Ave and Washington Street in Boston's South End. This prestigious address is located within close walking distance of the 508-bed Boston Medical Center, Boston University Medical Campus, Hampton Inn, Crosstown Center, Northeastern University, Boston Conservatory of Music, and Symphony Hall.

In addition to the constant flow of daily and evening foot-traffic, the site is highly-visible from the 35,000+ (ADT) automobiles that pass through this signalized intersection each day.



The space is ideal for a cafés, restaurants, and national chain-store retailers seeking a prominent high-foot-traffic urban location with easy access to a vibrant cross-section of affluent sophisticated South End residents, urban professionals, students, and medical personnel.



Boston Realty Advisors

745 Boylston Street  
Boston, MA 02116  
617.375.7900  
[www.bradvisors.com](http://www.bradvisors.com)

**FOR MORE  
INFORMATION**

**JIM SPEROS**

617.850.9678

[jsperos@bradvisors.com](mailto:jsperos@bradvisors.com)



Demographics • 1750 Washington Street	One-Mile Radius	Two-Mile Radius	Three-Mile Radius
<b>Population</b>			
2010 Est. Total Population	70,399	240,733	445,349
<b>Households</b>			
2010 Est. Total Households	31,181	99,334	186,279
<b>Income</b>			
2010 Average Household Income	\$83,858	\$79,277	\$83,716
<b>Daytime Population</b>			
2010 Average Daytime Population	98,466	442,733	583,598

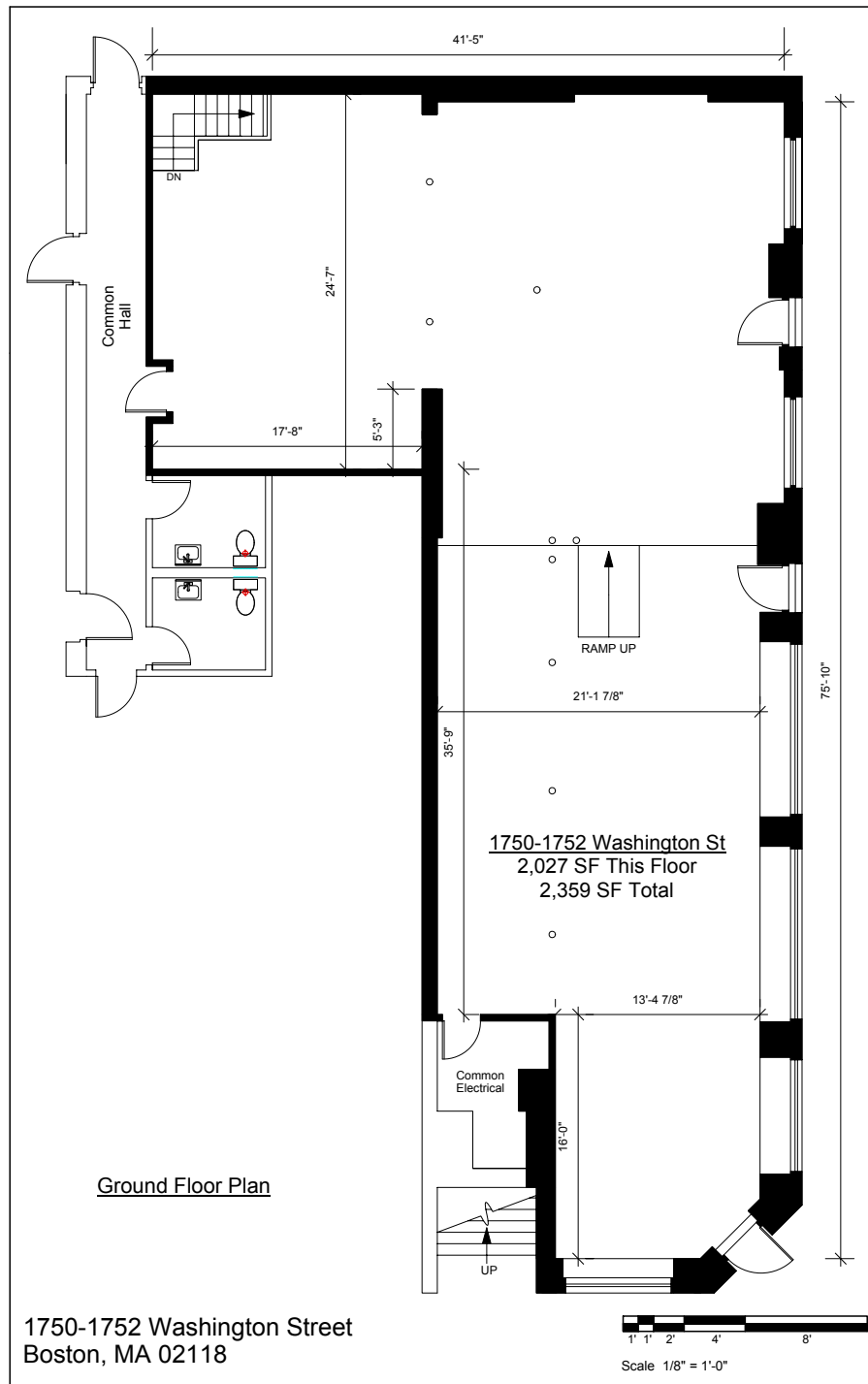


Boston Realty Advisors

745 Boylston Street  
Boston, MA 02116  
617.375.7900  
www.bradvisors.com

**FOR MORE  
INFORMATION**

**JIM SPEROS**  
617.850.9678  
jsperos@bradvisors.com



1		<p>Completed: December, 2006</p> <p><small>Note: Dimensions are not guaranteed and are provided for informational purposes only.</small></p>	
---	--	--	--